
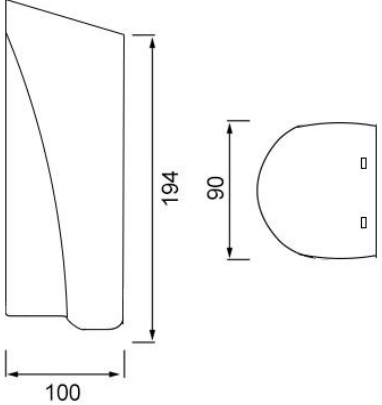
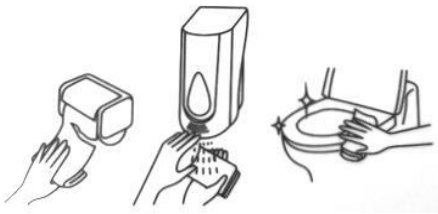




PROJECT		REF		REV	ITEM CODE	
LOCATION		DATE			PAGE	

## SANITARY WARE SPECIFICATION SHEET

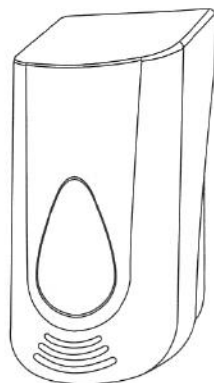
Item Descriptions	EMCA (PRC) 400ml manual operated plastic toilet seat cleaner dispenser	<p>Illustration/ Drawing</p> 
Dimensions	L90 x W100 x H194 mm	
Model	EM8CD-1168A	
Material	ABS	
Country	PRC	
Supplier	Acme Sanitary Ware Co. Ltd Mr. Eric Wong/ Mr. Don Yuen	
Contact Tel/Fax	(852) 2388-7171 / (852) 2710-8012	
E-mail	acme@acmesanitary.com.hk	
Website	www.acmesanitary.com.hk	
<p><b>Manual Toilet Seat Dispenser</b>  Model : EM8CD-1168A  Size : L90 x W100 x H194 mm  Vol. : 400 ml</p> <p>* This model has three different pumps with different mode (Liquid, Foam, Spray)  * One drop is of :  - 1.5ml (Liquid)  - 0.4ml (Foam)  - 0.3ml (Spray)  * Please choose one of the mode before order</p> 		

Note:

\* All information of the above is for the reference only. No prior notice is made if any changes.

# USER MANUAL

## SOAP DISPENSER & FOAM SOAP DISPENSER SPRAY DISINFECTION MACHINE



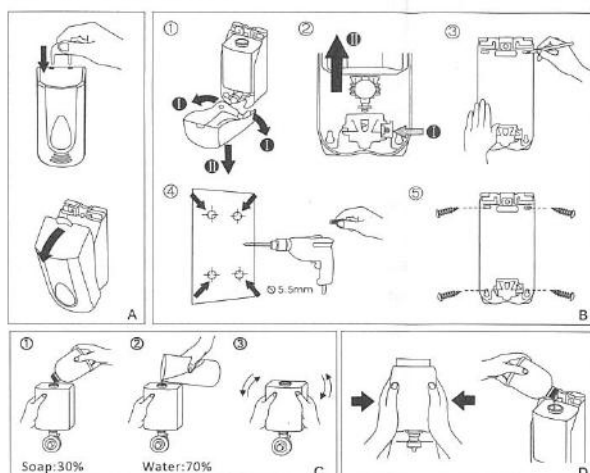
Please read user manual careful before using.

products are steel materials from refined, durable. the touch of button can satisfy you want the effect, that is, save money and effort, but also environmental protection. it is hotels, luxury clubhouse, bath center, beauty salon and the best choice for families

### ◆specifications

Dimensions	L90 × W100 × H194mm
Capacity	400ml
The liquid	1.5ml(liquid) 0.4ml(foam) 0.3ml(spray)
Weight	253.3g
Material	ABS

### ◆operation icon



### ◆refer to figure (2)

the product has a liquid soap, foam, spray three functions, the replacement of different liquids to replace the corresponding pump head (such as: a soap bubble you need to put liquid soap into the pump head for into.

### ◆proposal

As different soap concentration is different regions, resulting in inability to use this product in some area's the liquid soap (press any soap come out), if we find the above, it advise to use the water to press it can be come out liquid. you can pour out residual water, then load the required soap.

Note: This product is 100% in the production process into clear water testing, water droplets if the product found is normal.

### ◆notes & maintenance

- to prevent any objects blocking the fluid orifice, if you find that the container is dirty or has debris, rinse the soap clean and replacement.
- If long time do not use soap dispenser, the liquid soap may be solidified agent.
- Do not use corrosive chemical cleaning products, so as to avoid the appearance of surface damage and deformation.
- If the product has leakage problems, which can replace the pump head.

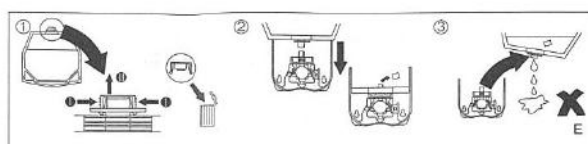


Fig (1)

**Step 1-**Refer to Figure A in Fig(1), using the supplied key will open the surface shell.

**Step 2-**Refer to Figure B in Fig(1):

- direction of the arrow to the front panel, and the bottom shell separation.
- first push the pump head to the left hand button, and then take out the bottle.
- use the wall as a template, a pen, mark the wall to drill the mounting holes.
- use the impact of drilling holes in the marked place with the supplied rubber plugs inserted into holes.
- bottom shell with screws to fasten the mounting location.

**Step 3-**Refer to Figure C in Fig(1), if you bought the Bubble machine, you need to change the soap water into foam water, you can ① put 30% soap water into bottle ② than put into 70% clean water ③ cover the lip and mix the liquid.

**Step 4-**Refer to Figure D in Fig(1), after install the bottle you can put into the liquid.

**Step 5-**Refer to Figure E in Fig(1), Products can use disposable bag.



Fig (2)